

Source Audio External Tap Tempo Footswitch User's Guide



Welcome

Thank you for purchasing the Source Audio External Tap Tempo Footswitch. This accessory allows you to set the LFO speed or delay time for compatible Source Audio products (for example, the Vertigo Tremolo, Gemini Chorus, Mercury Flanger, Lunar Phaser, and Nemesis Delay). It also has a standard 1/4" output for use with compatible third-party products (normally open [NO], SPST).

Enjoy!

- The Source Audio Team

Tap Tempo Outputs

There are two outputs that allow the External Tap Tempo Footswitch to connect to external devices, a 1/4" two-conductor TS output, and a 3.5 mm (1/8") four-conductor TRRS output.

1/4" TS Output

The 1/4" TS output was designed to work with most third-party products (and the Source Audio Nemesis). It acts as a normally-open, momentary SPST switch. Check the documentation of your third-party device to make sure this configuration is compatible. The tip contact is the switch signal, and the sleeve contact is ground. Connect the 1/4" TS Output to your compatible third-party device using a mono (TS) 1/4" instrument cable. When using the Nemesis delay, make sure to set the slide switch to the SWITCH position.



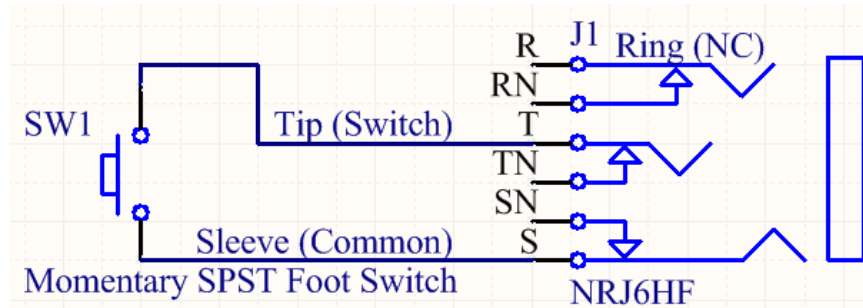
1/8" TRRS Output

The 1/8" TRRS output was designed to work with compatible Source Audio products. The tip contact is power, the ring 1 contact is the switch signal, the ring 2 contact is not used, and the sleeve contact is ground. The TRRS output includes a passive de-bounce circuit to eliminate mechanical switch bounce and chatter problems. Connect the 1/8" TRRS Output to your compatible Source Audio device's Control Input jack using a 4-conductor (TRRS) 1/8" cable. These TRRS cables are available on the Source Audio website (search for Daisy Chain/Sensor Cable).

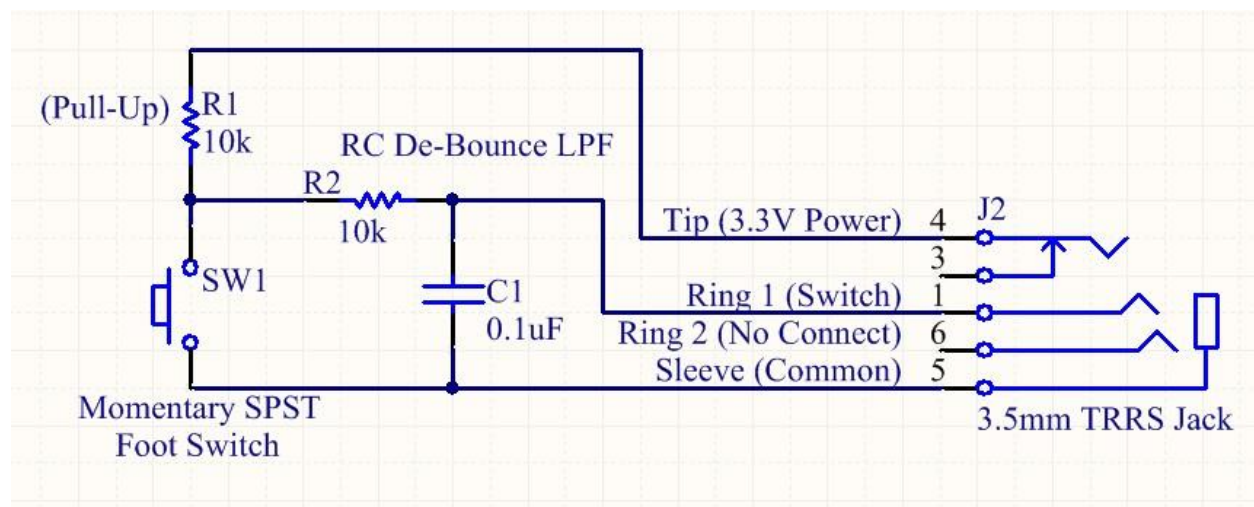


Internal Circuit

The 1/4" TS output is a direct connection to a momentary single pole single throw foot switch. The jack is actually a TRS jack, but the ring conductor is not used. So, a standard TS cable may be used with this output. The tip and sleeve conductors connect directly to the two switch terminals. The circuit for the 1/4" TS output is shown in the following figure:



The 1/8" TRRS output, which interfaces with the One Series control input, needs to be more than a simple switch; a pull-up resistor and RC passive low pass filter are required. The circuit for the 1/8" TRRS output is shown in the following figure:



Enabling Tap Tempo on your Source Audio Effects Pedal

To enable tap tempo on your One Series pedal, use the Neuro App or the USB Editor software.

Neuro App

In the Neuro App, go to the Hardware Options screen for the corresponding product and then turn on the switch labeled "Enable External Tap Tempo Switch."

USB Editor

In the USB Editor software, check the box labeled "Enable External Tap Tempo Switch."

Warranty

Limited Transferrable Warranty

Source Audio, LLC (hereinafter “Source Audio”) warrants that your new Source Audio External Tap Tempo Footswitch, when purchased at an authorized Source Audio dealer in the United States of America (“USA”), shall be free from defects in materials and workmanship under normal use for a period of two (2) years from the date of purchase by the original purchaser. Please contact your dealer for information on warranty and service outside of the USA.

Under this Limited Warranty, Source Audio’s sole obligation and the purchaser’s sole remedy shall be repair, replacement, or upgrade, at Source Audio’s sole discretion, of any product that, if properly used and maintained, proves to be defective upon inspection by Source Audio. Source Audio reserves the right to update any unit returned for repair and to change or improve the design of the product at any time without notice. Source Audio reserves the right to use reconditioned parts and assemblies as warranty replacements for authorized repairs. Any product repaired, replaced, or upgraded pursuant to this Limited Warranty will be warranted for the remainder of the original warranty period.

This Limited Warranty is extended to the original retail purchaser. This Limited Warranty can be transferred to anyone who may subsequently purchase this product provided that such transfer is made within the applicable warranty period and Source Audio is provided with all of the following information: (i) all warranty registration information (as set forth on the registration card) for the new owner, (ii) proof of the transfer, within thirty (30) days of the transfer, and (iii) a photocopy of the original sales receipt. Warranty coverage shall be determined by Source Audio in its sole discretion. This is your sole warranty. Source Audio does not authorize and third party, including any dealer or sales representatives, to assume any liability on behalf of Source Audio or to make any warranty on behalf of Source Audio.

Warranty Information

Source Audio may, at its option, require proof of the original purchase date in the form of a dated copy of the original authorized dealer’s invoice or sales receipt. Service and repairs of Source Audio products are to be performed only at the Source Audio factory or a Source Audio authorized service center. Prior to service or repair under this Limited Warranty, the purchaser must request from Source Audio a return authorization, which is available at:

Source Audio LLC
120 Cummings Park, Woburn, MA 01801
(781) 932-8080 or at www.sourceaudio.net

Unauthorized service, repair, or modification will void this Limited Warranty.

Disclaimer and Limitation of Warranty

Do not open the effects pedal under any circumstance. This will void the warranty.

The foregoing limited warranty is the only warranty given by Source Audio and is in lieu of all other warranties. All implied warranties, including warranties of merchantability and fitness for any particular purpose, exceeding the specific provisions of this limited warranty, are hereby disclaimed and excluded from this limited warranty. Upon expiration of the applicable express warranty period, Source Audio shall have no further warranty obligation of any kind, express or implied. Source Audio shall in no event be liable for any special, incidental, or consequential damages suffered by the purchaser or any third party, including without limitation, damages for loss of profits or business or damages resulting from use or performance of the product, whether in contract or in tort. Source Audio shall not be liable for any expenses, claims, or suits arising out of or relating to any of the foregoing. Some states do not allow the exclusion or limitation of implied warranties so some of the above limitations and exclusions may not apply to you. This Limited Warranty gives you specific legal rights, and you may also have other rights, which vary, from state to state. This Limited Warranty only applies to products sold and used in the USA. Source Audio shall not be liable for damages or loss resulting from the negligent or intentional acts of the shipper or its contracted affiliates. You should contact the shipper for proper claims procedures in the event of damage or loss resulting from shipment.

Version History

July 27, 2015: Initial Release



©Source Audio LLC | 120 Cummings Park, Woburn, MA 01801 | www.sourceaudio.net